

CBW

PowerTrans PLUS PT+ 60-13 SBR

Type	PT+ 60-13 SBR	Unit
General information		
Number of chambers	13	stck
charging weight	60	kg
cycle time	184	sec
washing yield	1170	kg/h
washing time	40:00	min:sec
charging	100	%
availability	85	%
washing yield	990	kg/h
E Electrical connection ⁽¹²⁾		
Connected voltage [U_A] ⁽⁰¹⁾	400 / 480	V
Mains frequency ⁽⁰¹⁾	50 / 60	Hz
Connection value [S] ⁽⁰²⁾	27 / 32,4	kVA
Current consumption [I_A]	39 / 39	A
Leakage current [I_L] ⁽⁰³⁾	120,0	mA
cos φ	0,98	—
Terminal size	4 - 35	mm ²
Energy consumption [W] ⁽⁰⁴⁾	15,6	kWh
CA Compressed air connection		
Connection ⁽⁰⁵⁾	8	mm
Operating pressure	6,5	bar
Compressed air consumption	1053	NI/h
Compressed air consumption 85 %	895,05	NI/h
Compr. air consumption per kg TrW ⁽¹¹⁾	0,90	NI/kg
W Water connection		
Connection ⁽⁰⁶⁾	2,0	Zoll
Operating pressure	2 - 4	bar
Water consumption ⁽¹⁴⁾	7043	l/h
Max. throughflow	1230	l/min
Water consumption 85 %	5987	l/h
Water consumption per kg TrW ⁽¹¹⁾	6,0	l/kg

CBW PowerTrans PLUS PT+ 60-13 SBR

Type	PT+ 60-13 SBR	Unit
WW Waste water		
Connection ⁽⁰⁷⁾	159,0	mm
Waste water quantity ⁽⁰⁸⁾	6691,3	l/h
Max. throughflow	900,0	l/min
Connection Filter ⁽⁰⁷⁾	110,0	mm
S Steam connection		
Connection ⁽⁰⁹⁾	DN 65	-
Operating pressure	2,6 - 8	bar
Steam consumption	468	kg/h
Max. throughflow	30	kg/min
Steam consumption 85 %	397,8	kg/h
Steam consumption per kg TrW ⁽¹³⁾	0,4	kg/kg
EX Exhaust air		
Connection ⁽⁰⁷⁾	203	DN
Exhaust air volume with option "fan"	1200	m3/h
max. dynamic pressure with option "fan"	500	Pa
DI Data interface		
Interface	ETHERNET / RJ-45...	-
DC Detergent connection		
Connection ⁽¹⁰⁾	1/2	Zoll
Dimensions		
Machine dimensions (WxHxD)	2474x3306x10179	mm
Transport dimensions (WxHxD)	2420x2850x10179	mm
Infeed opening (WxH)	2700x3100	mm
Length through- put direction	10179	mm
Width	2474	mm
Height	3306	mm
Length loading hopper	1425	mm
Length compartment 1	854	mm
Length from compartment 2 extended chamber	604	mm
Length last compartment	854	mm
Length unloading chute	604	mm
Inner drum diameter	480	mm
Inner drum diameter	1907	mm
Weights		
Transport weight	11890	kg
Operating weight	15790	kg
Foundation loads		
Static point load at the foot	0,14 / 0,75	N/mm ²
Dynamic point load	0,25 / 7,74	kN
Number of feet	2 / 6	Stck
Total surface load	6,15	kN/m ²

CBW

PowerTrans PLUS PT+ 60-13 SBR

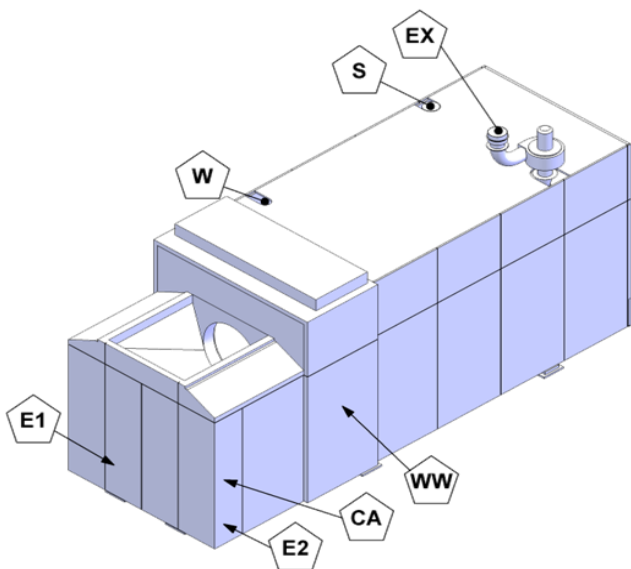
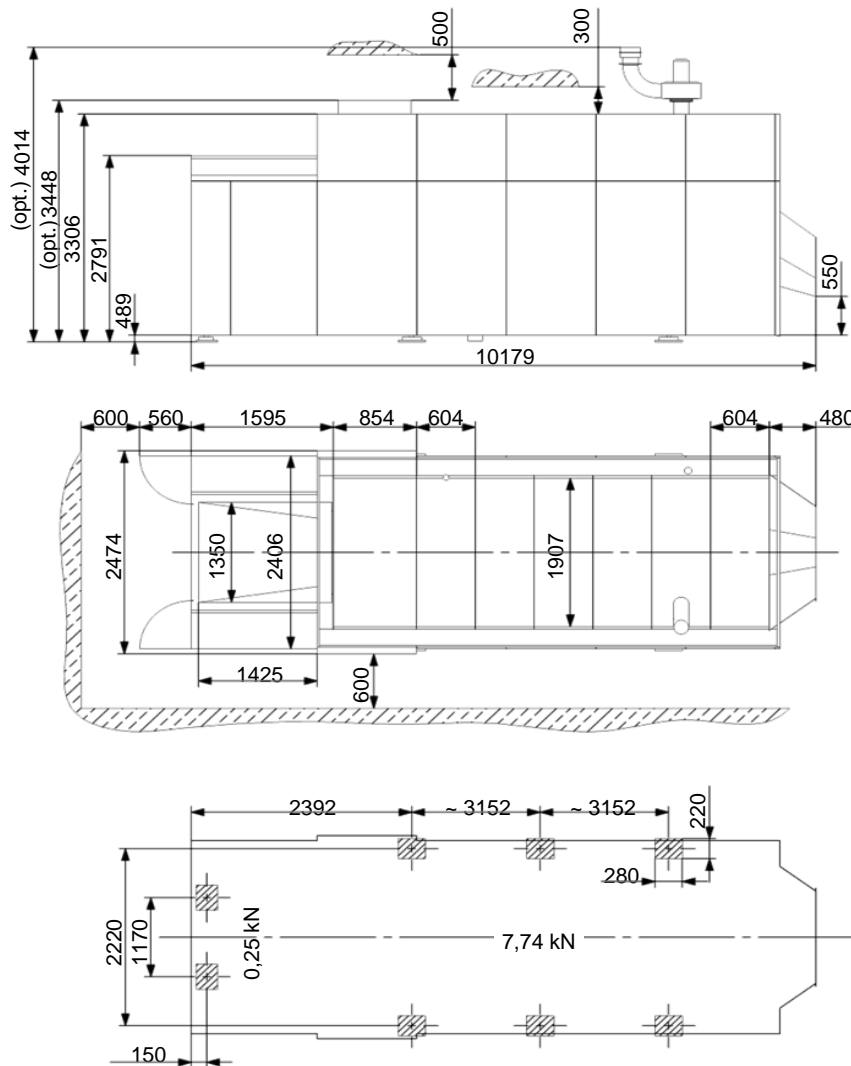
Type	PT+ 60-13 SBR	Unit
Miscellaneous		
Heat emission	13,5	kW
Noise emission	75	dB (A)

All specified consumption values are average values under standard conditions. The effective capacity depends on the conditions at the operating site and the type of laundry items. Depending on the processing method, significant fluctuations in these values are possible.

- (01) The machine can either be operated with 400V 50Hz or with 480V 60Hz.
- (02) The connection value S in [kVA] is based on the equation: $S = \sqrt{3} \cdot I \cdot U_A$
- (03) I (L) Leakage current, is diverted to PE
- (04) Energy consumption W referring to the respective machine operating point monitored over a period of 1 hour. It serves to estimate the electrical energy consumption of the complete laundry.
- (05) Plug-in connection for pneumatic hose, external diameter according to specification
- (06) Pipe outer thread (G- DIN ISO 228 - Whitworth thread, inch)
- (07) Smooth pipe, external diameter according to specification
- (08) In most cases, waste water occurs in cycles. Depending on the processing method, the temperature can rise to 95°C.
- (09) Flange according to DIN 2633, PN 16; counter flange on the washing lines and washer extractors is not included in the delivery scope.
- (10) Pipe inner thread (G- DIN ISO 228 - Whitworth thread, inch)
- (11) TrW = Dry work (cotton cloth according to DIN 53919)
- (12) A supply line with a connected voltage of 115..230 V, 50/60 Hz and a customer supplied fuse rating of max 16A is additionally installed on the machine. The supply line must be additionally protected by means of a residual-current-operated protective device (RCD) to protect the personal (30 mA) according to DIN VDE 0100-410 (IEC 60364-4-41:2005-12, modified), section 411.3.3, .
- (13) The steam consumption of 0.4 kg/kg TrW is an average figure using thermal disinfection process and 2 bath exchanges. The steam consumption may be between 0.2 and 0.5 kg/kg TrW depending on the procedure
- (14) This is possible for processes with only one bath exchange and provided that the main wash liquor is reused for following wash processes.

All rights for technical modifications withheld

**CBW
PowerTrans PLUS PT+ 60-13 SBR**



E	Electrical connection
CA	Compressed air connection
W	Water connection
WW	Waste water
S	Steam connection
EX	Exhaust air
DC	Detergent connection

(opt.) This is an optional connection not included in the standard version.

Attention! This sketch is not true to scale. Options may be included in this display. All rights for technical modifications withheld.