

**Water extraction press
PowerPress PP 10-60**

Type	PP 10-60-40	PP 10-60-56	PP 10-60-40 Turbo	PP 10-60-56 Turbo	PP 10-60-40 JET	PP 10-60-56 JET	Unit
General information							
Max. pressing pressure on the laundry items	40	56	40	56	40	56	bar
Batch diameter	1000	1000	1000	1000	1000	1000	mm
Nominal loading weight ⁽⁰⁸⁾	60	60	60	60	60	60	kg
Minimum cycle time ⁽⁰⁹⁾	80	80	60	60	120	140	s
Transfer height AH_{Min}	293	333	293	333	420	420	s
Height above transport belt H	3180	3282	3180	3282	3180	3282	mm
E Electrical connection							
Connected voltage [U_A] ⁽⁰¹⁾	400 / 480	400 / 480	400 / 480	400 / 480	400 / 480	400 / 480	V
Mains frequency ⁽⁰¹⁾	50 / 60	50 / 60	50 / 60	50 / 60	50 / 60	50 / 60	Hz
Connection value [S] ⁽⁰²⁾	18	18	18	18	22	22	kVA
Current consumption [I_A]	40 / 40	40 / 40	40 / 40	40 / 40	45 / 45	45 / 45	A
Peak current [I_s] ⁽⁰³⁾	100 / 100 3s 40/h	100 / 100 3s 40/h	100 / 100 3s 40/h	100 / 100 3s 40/h	100 / 100 3s 40/h	100 / 100 3s 40/h	A
cos φ	~ 0,6	~ 0,6	~ 0,6	~ 0,6	~ 0,6	~ 0,6	-
Terminal size	2,5-25	2,5-25	2,5-25	2,5-25	2,5-25	2,5-25	mm ²
CA Compressed air connection							
Connection ⁽⁰⁵⁾	8	8	8	8	—	—	mm
Operating pressure	6,5	6,5	6,5	6,5	—	—	bar
Compressed air consumption ⁽⁰⁷⁾	0	0	0	0	—	—	NI/h
Interlinked washing line ⁽¹³⁾	from PowerTrans	from PowerTrans	from PowerTrans	from PowerTrans	from PowerTrans	from PowerTrans	
W Water connection							
Connection ⁽⁰⁴⁾	12 - 13	12 - 13	12 - 13	12 - 13	12 - 13	12 - 13	mm
Operating pressure	2 - 3	2 - 3	2 - 3	2 - 3	2 - 3	2 - 3	bar
Water consumption ⁽¹⁰⁾	120	120	120	120	140	140	l/h
Max. throughflow ⁽¹⁶⁾	50	50	50	50	50	50	l/min
Rinsing water connection	—	—	—	—	from PowerTrans	from PowerTrans	
WW Waste water							
Connection ⁽¹¹⁾	110	110	110	110	110	110	mm
Max. waste water temperature	60	60	60	60	60	60	°C
Waste water quantity ⁽¹²⁾	1500	1500	1500	1500	1500	1500	l/h
Max. throughflow	600	600	600	600	600	600	l/min
DI Data interface							
Interface	RJ 45 ETHERNET	RJ 45 ETHERNET	RJ 45 ETHERNET	RJ 45 ETHERNET	RJ 45 ETHERNET	RJ 45 ETHERNET	
Interlinked washing line ⁽¹³⁾	from PowerTrans	from PowerTrans	from PowerTrans	from PowerTrans	from PowerTrans	from PowerTrans	
Dimensions							
Machine dimensions (WxHxD) ⁽¹⁵⁾	2420x	2420x	2420x	2420x	2420x	2420x	mm
	3180x	3285x	3180x	3285x	3180x	3285x	
Axial transport dimensions (WxHxD) ⁽¹⁴⁾	2800	2800	2800	2800	2800	2800	mm
	1740x	1740x	1740x	1740x	2120x	2120x	
	2370x	2500x	2370x	2500x	2370x	2500x	
LH / RH transport dimensions (WxHxD) ⁽¹⁴⁾	2180	2180	2180	2180	2180	2180	mm
	2390x	2390x	2390x	2390x	2390x	2390x	
Infeed opening (WxH)	2370x	2500x	2370x	2500x	2370x	2500x	mm
	1670	1670	1670	1670	1670	1670	
	2390x	2390x	2390x	2390x	2390x	2390x	mm
	2370	2500	2370	2500	2370	2500	
Weights							
Transport weight	11700	14100	11700	14100	12000	14400	kg
Operating weight	12100	14500	12100	14500	12400	14800	kg

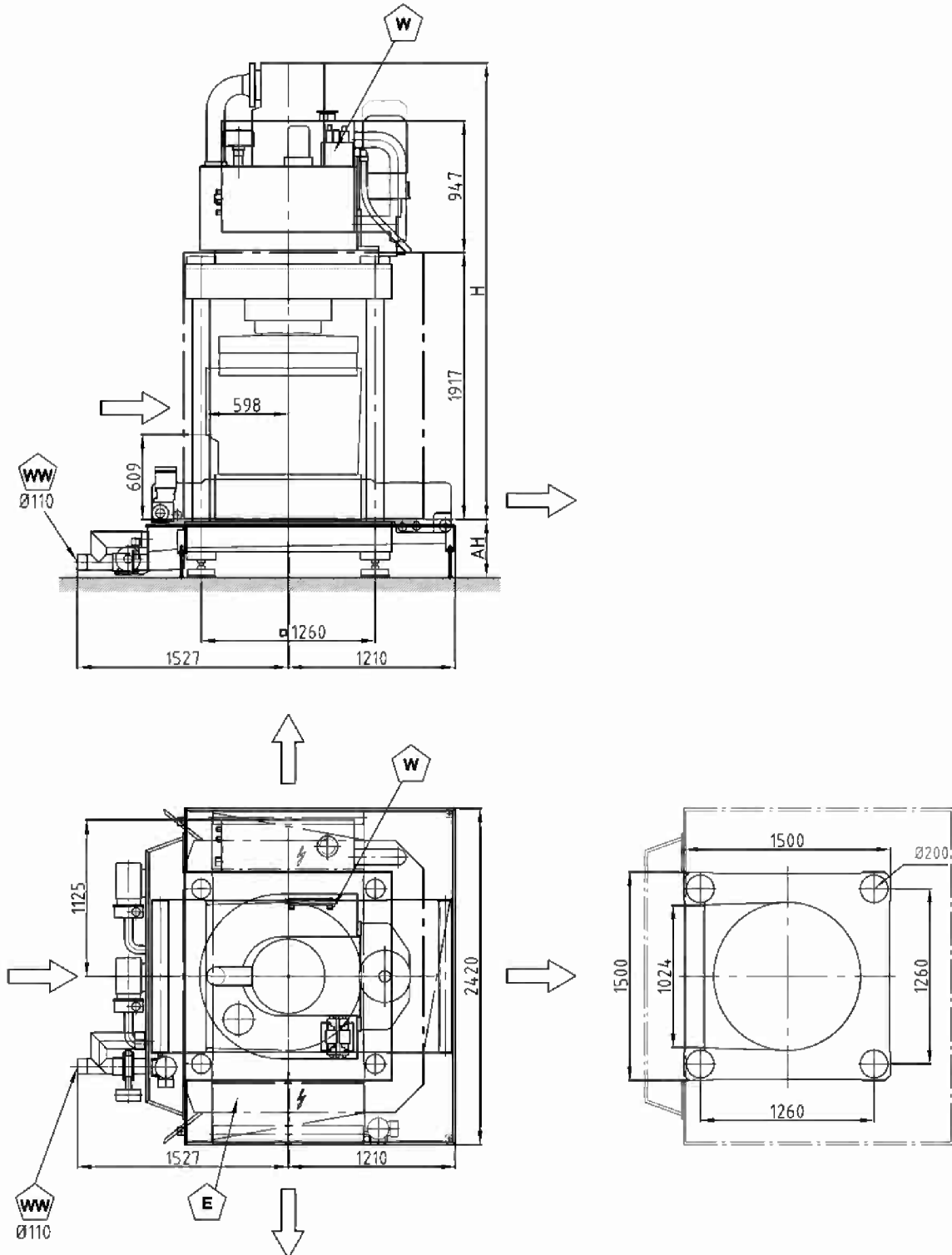
**Water extraction press
PowerPress PP 10-60**

Type	PP 10-60-40	PP 10-60-56	PP 10-60-40 Turbo	PP 10-60-56 Turbo	PP 10-60-40 JET	PP 10-60-56 JET	Unit
Foundation loads							
Static point load at the foot	0,74	0,89	0,74	0,89	0,76	0,91	N/mm ²
Dynamic point load	12	15	12	15	12	15	kN
Excitation frequency of the dynamic point load	< 0,01	< 0,01	< 0,01	< 0,01	< 0,01	< 0,01	Hz
Number of feet	4	4	4	4	4	4	[pcs.]
Surface of the individual foot	40000	40000	40000	40000	40000	40000	mm ²
Miscellaneous							
Heat emission	3	3	3	3	4	4	kW
Noise emission ⁽⁰⁶⁾	72 (78)	72 (78)	72 (78)	72 (78)	80 (86)	80 (86)	dB (A)
Pump-over tank volume with transfer height 420 mm	500	500	500	500	350	350	l
Pump-over tank volume with transfer height 293 mm	350	350	350	350	—	—	l

- (01) The machine can either be operated with 400V 50Hz or with 480V 60Hz.
- (02) The connection value S in [kVA] is based on the equation: $S = \sqrt{3} \cdot I \cdot U_A$
- (03) I (S) Peak current; including the specification of duration and frequency
- (04) Hose socket for fabric hose, internal diameter according to specification: connection must be flexible (e.g. via hose).
- (05) Plug-in connection for pneumatic hose, external diameter according to specification
- (06) Workplace-specific emission value; measurement according to DIN 45635, part 1; specification according to DIN 45649, part 1
- (07) 1 NI/day, only when the tank is drained
- (08) With reference to dry linen according to DIN
- (09) With 20 seconds high-pressure pressing time
- (10) With reference to a water temperature of 8 to 10 °C, is returned to the system via the pressing water tank
- (11) Smooth pipe, external diameter according to specification
- (12) With reference to 5 bath changes per hour
- (13) When press and washing line are supplied as an overall machine line, no separate air connection is required.
- (14) Transport belt, axial outfeed direction or LH / RH outfeed direction. Press when moved together. Switch cabinet / transport belt installed.
Height dimensions including transport rollers (armoured rollers) H = 100
- (15) Dimension 'H' = Height above transport belt (add the transfer height), dimension 'B' and 'T' including water box
- (16) At a water pressure of 3 bar

All rights for technical modifications withheld

**Water extraction press
PowerPress PP 10-60 JET**



E	Electrical connection
CA	Compressed air connection
W	Water connection
WW	Waste water
DI	Data interface

Attention! This sketch is not true to scale. Options may be included in this display. All rights for technical modifications withheld.