

CombiFeed Quadro Feeding Machine EMQ-S 01+2

Type	EMQ-S 30-01+2	EMQ-S 33-01+2	EMQ-S 35-01+2	EMQ-S 40-01+2	Unit
General information					
Working width A	3000	3300	3500	4000	mm
Width B	3040	3340	3540	4040	mm
Width C	3752	3752	3752	4252	mm
Width D	4745	4745	4745	5245	mm
Width E	750	750	750	1000	mm
E Electrical connection					
Connected voltage [U _A] ⁽⁰¹⁾	400 / 480	400 / 480	400 / 480	400 / 480	V
Mains frequency ⁽⁰¹⁾	50 / 60	50 / 60	50 / 60	50 / 60	Hz
Connection value [S] ⁽⁰²⁾	10,4/ 10,4	10,4/ 10,4	10,4/ 10,4	10,4/ 10,4	kVA
Current consumption [I _A]	15 / 12,5	15 / 12,5	15 / 12,5	15 / 12,5	A
Leakage current [I _l] ⁽⁰³⁾	225 / 225	225 / 225	225 / 225	225 / 225	mA
cos φ	~ 0,92 / ~ 0,92	~ 0,92 / ~ 0,92	~ 0,92 / ~ 0,92	~ 0,9 / ~ 0,9	-
Terminal size	6 / 6	6 / 6	6 / 6	6 / 6	mm ²
CA Compressed air connection					
Connection ⁽⁰⁴⁾	19 - 20	19 - 20	19 - 20	19 - 20	mm
Operating pressure	6,5	6,5	6,5	6,5	bar
Compressed air consumption	40000	40000	40000	42000	NI/h
EX Exhaust air					
Connection	2x 530x485	2x 530x485	2x 530x485	2x 530x485	mm
Exhaust air volume flow	10332	10332	10332	12490	m ³ /h
Max. back pressure	30	30	30	30	Pa
Max. temperature	45	45	45	45	°C
MC Modem connection					
Interface ⁽⁰⁵⁾	RS 232	RS 232	RS 232	RS 232	
DI Data interface					
Interface ⁽⁰⁵⁾	RJ 45	RJ 45	RJ 45	RJ 45	
Dimensions					
Machine / transport dimensions (WxHxD)	4745x2750x 2835	4745x2750x 2835	4745x2750x 2835	5245x2750x 2835	mm
Infeed opening (WxH)	2190x2510	2190x2510	2190x2510	2190x2510	mm
Weights					
Operating / transport weight	3700	3750	3800	4200	kg
Foundation loads					
Static point load at the foot	1,28	1,3	1,31	1,45	N/mm ²
Number of feet	4	4	4	4	[pcs.]
Surface of the individual foot	7090	7090	7090	7090	mm ²
Miscellaneous					
Heat emission	1,25	1,25	1,25	1,25	kW
Noise emission	75	75	75	75	dB(A)
Speed	6 - 60	6 - 60	6 - 60	6 - 60	m/min
Cantilever arm length					
800 indirect infeed	X min 605	X max 825	Y min 750	Y max 1420	mm
800 direct infeed	600	820	750	1420	mm
1075 indirect infeed	830	1100	750	1420	mm
1075 direct infeed	825	1095	750	1420	mm
Direct infeed HPM-G		820		1420	mm

All specified consumption values are average values under standard conditions (1000 laundry items/h in 1-lane mode and 1600 laundry items/h in 2-lane mode).

Depending on the processing method, significant fluctuations in these values are possible.

(01) The machine can either be operated with 400V 50Hz or with 480V 60Hz.

(02) The connection value S in [kVA] is based on the equation: $S = \sqrt{3} \cdot I_A \cdot U_A$

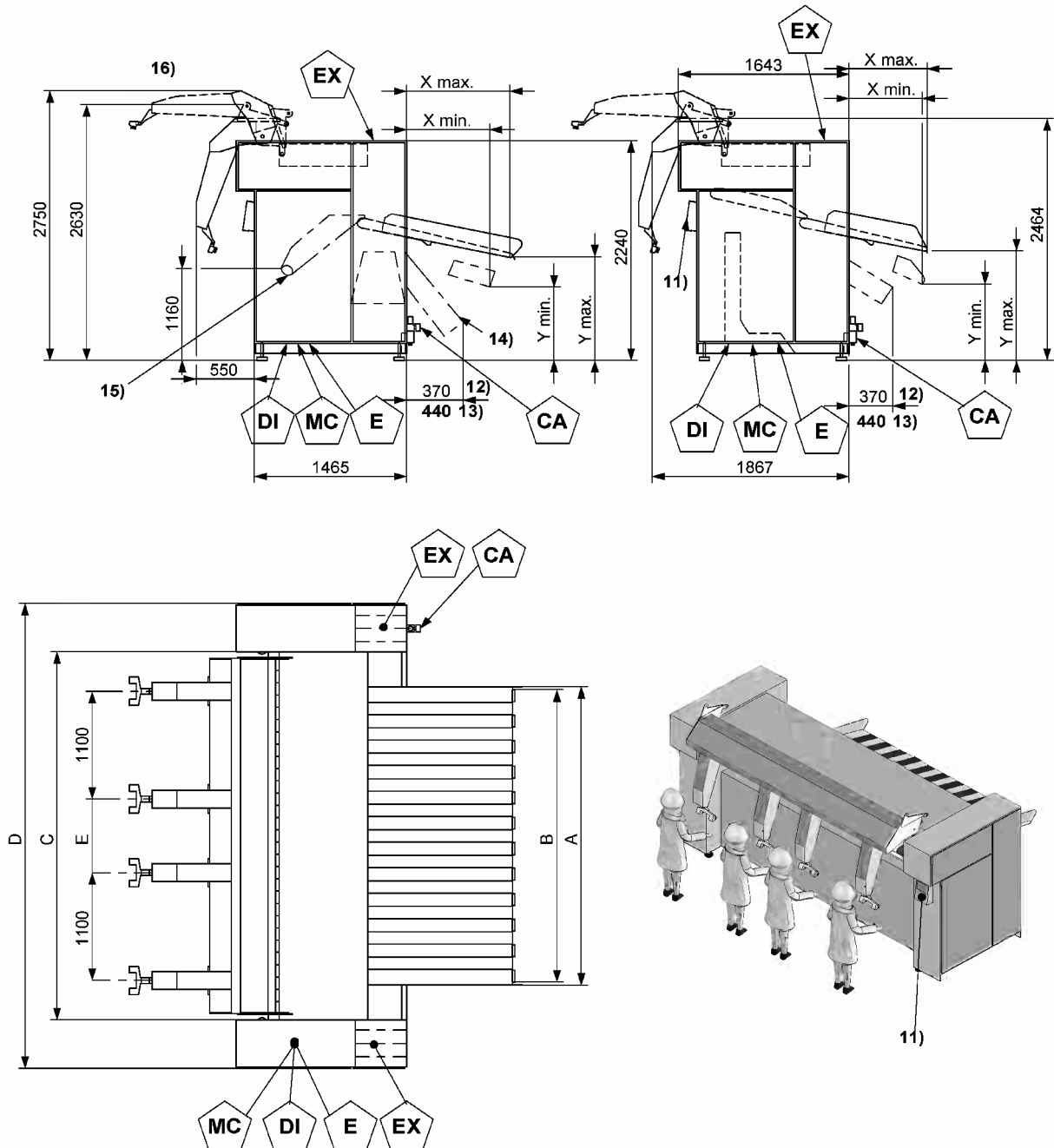
(03) I (S) Peak current; including the specification of duration and frequency

(04) Hose socket for fabric hose, internal diameter according to specification

(05) Optional connection not included in the standard version

All rights for technical modifications withheld

**CombiFeed Quadro Feeding Machine
EMQ-S 01+2**



- 11) Operating panel optionally on the RH or LH side.
- 12) without brush
- 13) with brush
- 14) Possibility for transport
- 15) Manual infeed
- 16) Clamp moves in

E	Electrical connection
CA	Compressed air connection
(opt.) EX	Exhaust air
(opt.) MC	Modem connection
DI	Data interface

(opt.) This is an optional connection not included in the standard version.

Attention! This sketch is not true to scale. Options may be included in this display. All rights for technical modifications withheld.